

LANIER

NSi™
Output Manager™

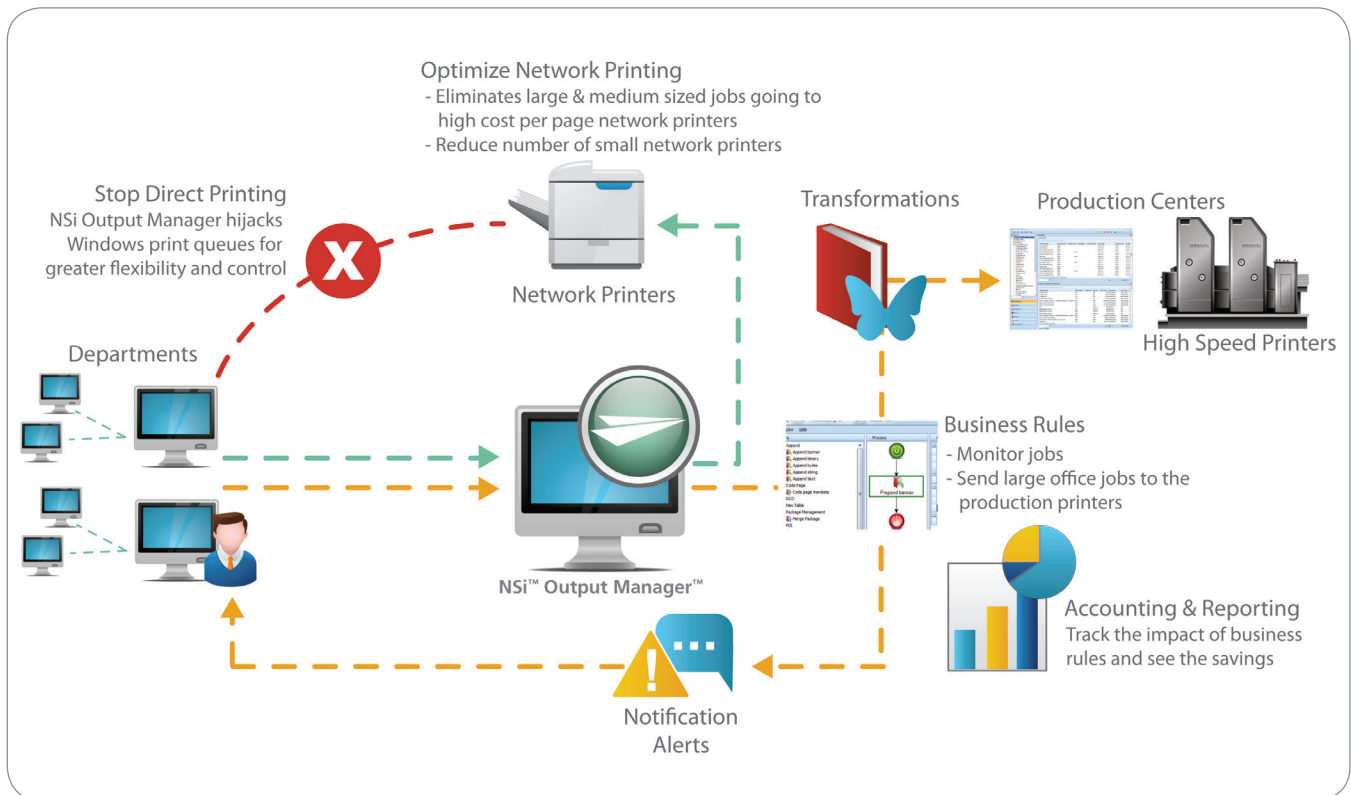


Control what you print, deliver — and save.

Information drives your business. And it helps define who you are as a company. So why aren't you controlling how it's delivered? NSi™ Output Manager™ from LANIER™ consolidates output management systems to simplify how you produce and share information. Use it to send documents to any location, including email, network folders, FTP sites and network printers. You can choose the most convenient delivery method to minimize print output and associated costs. Plus, you can track the entire process so you know who is sharing documents and where they are printed.

Combine workflows. Add efficiency.

You have your own way of working. So does the person in the next office. That's why you use different technologies to create files and documents. You probably have preferences for delivering them too. But what happens when some of those are less efficient than others? NSi Output Manager is designed to optimize production, office and enterprise printing. Integrate the easy-to-use system seamlessly into existing infrastructure and merge every file into a single, integrated workflow. Use it to set business rules, migrate from inefficient legacy printers, audit users and tasks, help recover costs and much more — all from the convenience of an intuitive software interface.



Transform production and office printing

Comprehensive, end-to-end control for the office

You're in charge. That means you're accountable for managing the flow of information and controlling costs for your organization. Choose NSi Output Manager to consolidate input from multiple platforms and applications in a single, comprehensive system. It enables you to account for all output and offers a convenient way to print documents to an office printer at your users' convenience without compromising security or efficiency. Each print request is held in queue until an authorized user with a username and password or security card releases it. It helps reduce unnecessary printing and ensures your most critical documents end up in the right hands at the right time.

Streamline your workflow

Do you know what's being printed in your office? Do you know who's printing it? Most importantly, do you know how much it's costing you? Whether files originate on a mobile device, mainframe, desktop or an office MFP, you can manage them easily by mapping document properties (headers, job tickets, etc.) directly to NSi Output Manager and creating a workflow based on specific job information. Use it to queue jobs, schedule printing, reprint, balance loads, set priorities and merge information. Take advantage of advanced reporting to gather critical information and calculate print costs, too.

With NSi Output Manager, you can connect to your systems and receive files seamlessly from any number of input sources, including:

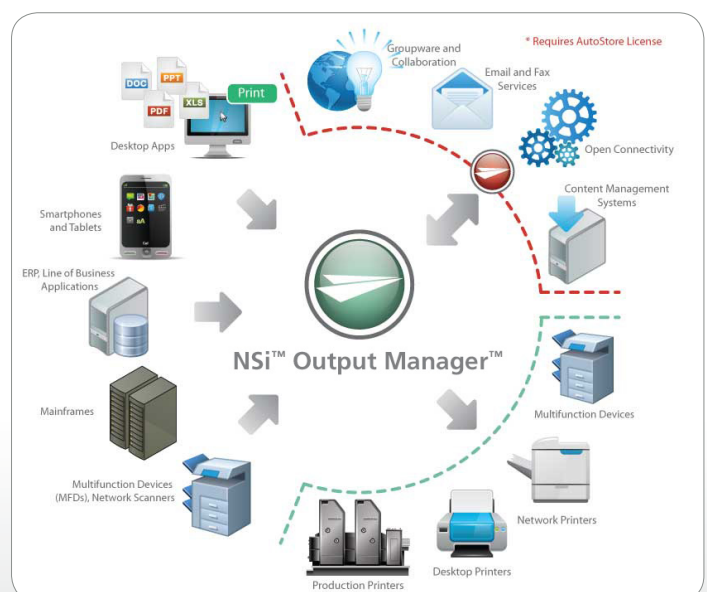
- FTP and Web Upload
- LPD/LPR and IP Sockets
- Network Folders
- Mainframe Printer Emulation
- Windows Print Queues
- MQ Series
- Email
- Network Job Entry (NJE)

Share efficiencies throughout the office

Shouldn't finding a more efficient way to work be automatic? We think so. That's why we've simplified workflow so you can capture print streams and share documents more effectively in a variety of ways, including:

- Connect devices to local, remote and legacy host environments
- Merge office and data center applications into a single workflow to improve efficiency and security while reducing costs
- Capture and redirect large print files from inefficient desktop printers to cost-effective production printers
- Transform incompatible document formats
- Remotely submit jobs to data centers and print rooms

- Provide unprecedented control and flexibility for document workflows
- Improve print applications by modifying document contents (i.e. add or remove text, OMR marks, barcodes, imposition commands, overlays, and images)
- Automatically burst, bundle and group documents to eliminate manual post production processes
- Meet SLAs by splitting large print jobs across multiple engines
- Provide outstanding job/queue management through tailored operator and user interfaces enabling page range reprints, redirection of print, failover workflows and automatic alerts
- Allocate costs of office, CRD and production environments in a single tool
- Increase security and reduce waste through 'secure release' device access
- Provide audit trails and accounting reports
- Manage printers in multiple vendor environments



Choose NSi Output Manager to route files to multiple destinations, including network folders, FTP, email, fax, web, CD/DVD, COLD/ERM, network printers, MFDs, continuous and cut-sheet printers and IPDS printers.

Enterprise-wide printing and distribution

Simplify printing across your organization

New technologies allow you to submit print jobs from almost anywhere. Shouldn't you be able to distribute or retrieve them just as easily? NSi Output Manager includes rules-based capabilities so jobs can be automatically routed to a more appropriate printer or device, anywhere on the network. Sometimes documents will require modifications depending on the final destination. Use the intuitive user interface to configure a string of actions to occur in sequence. The complete sequence is saved as a process to expedite future tasks, including:

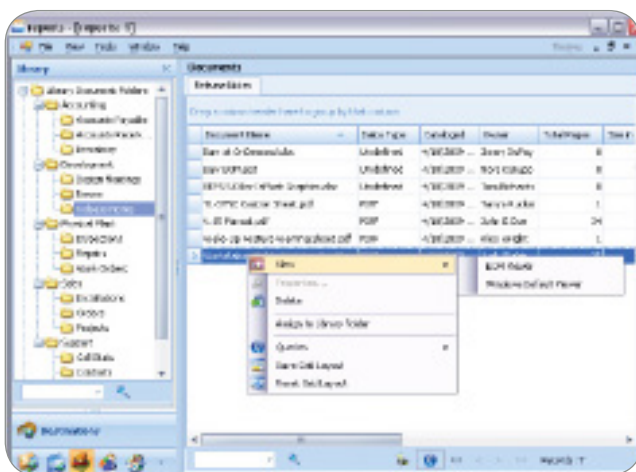
- Searching and replacing
- Inserting banners
- Inserting headers or footers
- Pre-pending and appending of files
- Translating code pages
- Running scripts
- Transforming document formats
- Inserting and replacing PDL commands
- Applying Forms Control Buffers (FCBs)

Real-time tracking and reporting

Now you know. With NSi Output Manager you can centrally monitor all sources, documents, document management activities and destinations in real-time and display complete details of print usage. Choose to be notified if errors occur when documents are routed, retrieved or converted — or when printer problems compromise performance. End users can follow the status of their projects with automated notifications. In addition, it includes a comprehensive print audit trail. Every processed document, every device and every click is documented, so you can identify bottlenecks, inefficiencies and abuse and take corrective action.

Versatility that grows with you

One thing never changes — your enterprise is in flux. Output devices move or change almost as often as the people who use them do. Fortunately, NSi Output Manager can move with them. The user interface console and Windows services that form the core of the solution for administrators, operators and support teams can run on almost any PC. It can even be used on virtual platforms, including VMWare and many other virtual or Cloud-based environments. Plus, it enhances business continuity by automatically re-routing print jobs to backup printers when necessary.



Add more control and smarter rules-based print capabilities into existing environments and workflows with the all-in-one, scalable NSi Output Manager.

About Ricoh

Ricoh is a global technology company specializing in office imaging equipment, production print solutions, document management systems and IT services. Headquartered in Tokyo, Ricoh Group operates in about 200 countries and regions. In the financial year ending March 2013, Ricoh Group had worldwide sales of 1,924 billion yen (approx. 20 billion USD).

The majority of the company's revenue comes from products, solutions and services that improve the interaction between people and information. Ricoh also produces award-winning digital cameras and specialized industrial products. It is known for the quality of its technology, the exceptional standard of its customer service and sustainability initiatives.

Under its corporate tagline, *imagine. change.* Ricoh helps companies transform the way they work and harness the collective imagination of their employees. For further information, please visit www.ricoh.com/about.

Comparison Matrix

Printers	User Functions	Office	Enterprise	Production
Office Printers		●	●	
Multifunction Devices (MFDs)		●	●	
Production Printers				●
Scan to Folder (image only)		●	●	
Scan to Email (image only)		●	●	
Authentication Smartcards, PIN, LDAP, AP		●	●	
Pull-Print Release		●	●	
Printer Detection and Monitoring (SNMP)		●	●	●
Print Failover		●	●	●
Universal PostScript Driver		●	●	●
Usage Reporting		●	●	●
Document Control		●	●	●
Alerts and Notifications		●	●	●
Web Release Station		●	●	●

(continued on next page)

NSi™ Output Manager™

Comparison Matrix (Continued)

	Office	Enterprise	Production
Rules Based Printing		●	●
NSi™ AutoStore® Integration		●	●
Cost Management		●	●
Desktop Notifications		●	●
Access Control (Scan/Fax/Copy/Print/Color)		●	
Pull-Print Release Guest Mode		●	
Management of Print Centers <ul style="list-style-type: none"> • Support for IPDS Printers • Queue management • Spooling, load balancing • Reprints, Page range printing • Finishing modifications • Print Preferences via PjL, Job tickets 			●
Mobile Print & Submit	OPTION	OPTION	
Enhanced Desktop Client	OPTION	OPTION	
Content Based Filtering		OPTION	OPTION
Document Print Library	OPTION	OPTION	OPTION
Host/Mainframe print stream management (SAP/PeopleSoft, etc.)		OPTION	OPTION
Transformations <ul style="list-style-type: none"> • Search and replace, splitting • Insertion of overlays, barcodes, OMR marks • Text, PCL, PS, PDF, TIF, AFP, etc. 		OPTION	OPTION

AutoStore is a registered trademark of NSi.

Ricoh Americas Corporation is an authorized reseller of NSi Mobile. Ricoh makes no representation or warranties about the NSi products or services contained herein.

www.lanier.com

Ricoh Americas Corporation, 70 Valley Stream Parkway, Malvern, PA 19355 1-855-5LANIER
 Lanier™ and the Lanier logo are trademarks of Ricoh Americas Corporation. Ricoh® and the Ricoh Logo are registered trademarks of Ricoh Company Ltd. All other trademarks are the property of their respective owners. ©2013 Ricoh Americas Corporation. All rights reserved. Lanier products and services are offered by Ricoh Americas Corporation and its affiliates. The content of this document, and the appearance, features and specifications of Lanier products and services are subject to change from time to time without notice. Products are shown with optional features. While care has been taken to ensure the accuracy of this information, Ricoh makes no representation or warranties about the accuracy, completeness or adequacy of the information contained herein, and shall not be liable for any errors or omissions in these materials. Actual results will vary depending upon use of the products and services, and the conditions and factors affecting performance. The only warranties for Lanier products and services are as set forth in the express warranty statements accompanying them.