

LANIER

Streamline NX[®]

Capture, Distribution & Output Management Solution



Integrate more control for more efficient workflow

Efficient document management goes beyond the printed page. With LANIER® Streamline NX, organizations can simplify document creation, storage, retrieval, distribution, card authentication, printing, secure print and device management to improve productivity and reduce operating costs. This innovative, customizable suite of integrated solutions offers exceptional controls for user authentication, secure printing, flexible scanning, quota management, versatile reporting and more. Take advantage of its intuitive, easy-to-use interface, incredible scalable modularity and powerful administrative tools to manage your MFP fleet more effectively — and help reduce total document management costs.

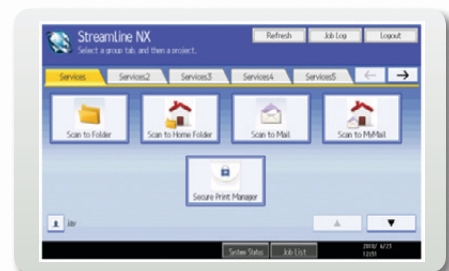
Centralized, one-source control

Improve document management efficiency with an all-in-one, integrated solutions package from an industry leader with world-class support. Streamline NX combines print, scan, device management, accounting and authentication application modules in one convenient platform. It offers a wide range of process controls to ensure organizations can manage and monitor document costs, technology, sustainability and security more effectively. Plus, it simplifies a wide range of tasks for administrators and end users to reduce total cost of ownership with minimal training or investment.



Convenient, user-friendly interface

Users can manage each of the versatile solution components — as well as networked MFPs — via the web-based, integrated interface with drag-and-drop functionality. Streamline NX offers easy access to a wide range of document management tasks from the customizable home screen. Large buttons and icons can be resized and placed in convenient locations on the screen to eliminate excessive toggling between other screens and applications. Users can access each application with a single touch to expedite workflow and to find necessary information quickly and accurately.



Protect the bottom line — and more

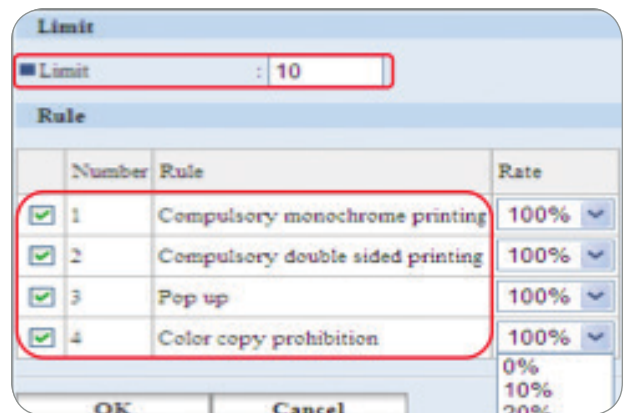
End user authentication

Control costs by controlling access to shared devices. Streamline NX offers comprehensive authentication features to ensure only authorized users have access to critical scan, print, fax, copy and distribution functions. Users are authenticated or authorized by swiping a registered card, or by entering a login or password at the MFP. Administrators can grant authorization for specific individuals or groups and for specific functions to maximize cost efficiency in any office environment.



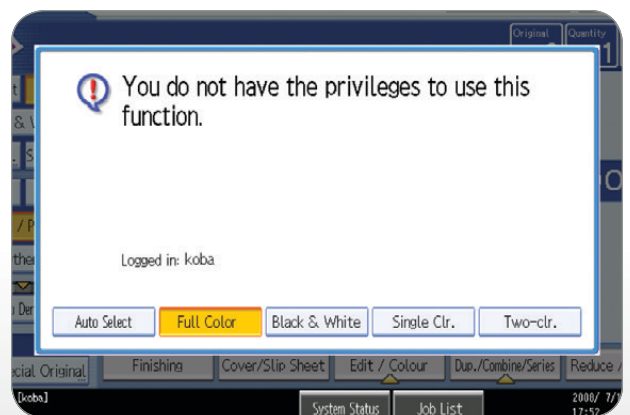
Less waste, less cost

User authentication minimizes excess print costs. Documents are printed only when an authorized user is ready to retrieve them, which eliminates unclaimed documents left unattended in the output tray. Users can also delete older versions of print job sent to a device and print only their final version. Administrators can limit specific functions to specific users. For example, default duplex printing or monochrome printing can reduce paper costs and minimize unnecessary color printing.



Document confidentiality

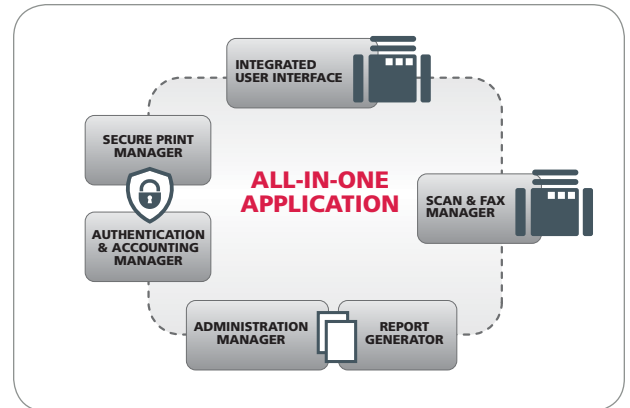
Protect sensitive information by restricting access to critical documents. With the secure document release feature, organizations can ensure only authorized users have access to confidential documents. Administrators can set up authentication controls to prevent the release of sensitive information until an authorized user is available to retrieve the document. This feature merges vulnerable paper documents into secure document workflows to help support regulatory compliance and security policies.



Customize workflow to maximize performance

Automated document workflows

Nobody knows your business better than you do. With Streamline NX, you can leverage your knowledge to customize predetermined workflows and ensure optimal productivity. Document workflows minimize error-prone manual steps at the MFP control panel so authenticated users can perform everyday document management tasks, including advanced scanning and distribution, within moments with incredible ease and accuracy.



Streamlined scanning and distribution

Convert paper documents to digital for fast, easy sharing and storing throughout the organization. Streamline NX offers a host of advanced scanning and distribution capabilities to help deliver the right information to the right people. One-touch scan can be used to distribute frequently used documents to common destinations with the single push of a button. Metadata can be entered at the MFP control panel to expedite indexing and retrieval tasks. Scanned previews ensure users can review key documents before distribution. A special plug-in even integrates documents from non-networked devices into Streamline NX workflows.



Powerful print performance

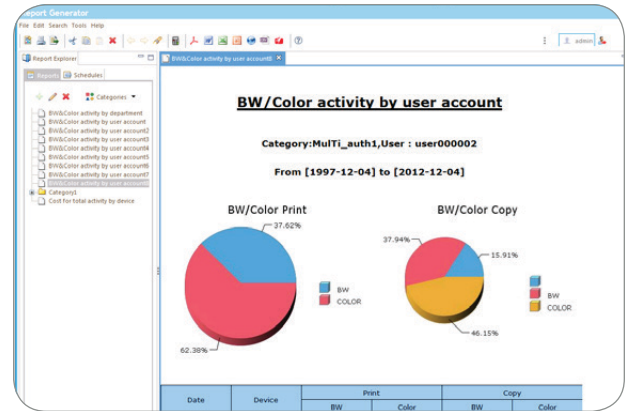
Streamline NX provides more unique print controls to enhance network print efficiency. After authentication, users can release print jobs from the most accessible networked device to improve productivity and performance in more locations. For Lanier devices, administrators can also assign cost-saving print rules, including only black-and-white, duplex printing and more, to users who have reached their assigned quota for specific types of printing tasks. It ensures that Lanier MFPs are used more efficiently to reduce operating costs without compromising performance.



Track efficiency in your organization

Accurate reporting

Take advantage of detailed reports to monitor the performance of your Lanier MFP fleet. A web-based reporting module enables administrators to generate and configure a wide range of customizable reports to track user volumes for individuals, workgroups or departments. The reports can monitor usage rates by device and by function to ensure more cost-efficient, responsible printing. In addition, exact costs for Lanier MFPs can be tracked for more accurate charge backs to users and clients.



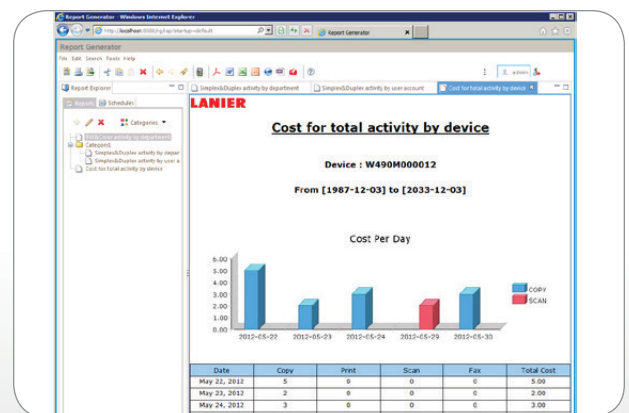
Regulatory compliance

Support regulatory guidelines and company security policies with Streamline NX. It provides secure authentication and comprehensive tracking and reporting for your entire fleet of Lanier MFPs and your whole workforce. Access job logs in moments to find out what is being printed by individual users on specific devices to simplify complex compliance issues and to ensure a more accurate audit trail.

Display Name	Device Address	Connection Status	System	Printer	Total Counter
Affico MP 3352 (172)	172.16.58.78	ACTIVE	READY	ALERT	89
Affico MP 3002 (172)	172.16.58.82	ACTIVE	SERVICE CALL	ALERT	4160
Affico MP 3002 (172)	172.16.58.86	ACTIVE	READY	ALERT	70
Affico MP 4000 (172)	172.16.58.96	ACTIVE	READY	READY	17984
Affico MP C3501 E 0	172.16.58.64	ACTIVE	READY	ALERT	7493
Affico MP C3502 (17)	172.16.58.62	ACTIVE	READY	ENERGY SAVER 893	

Intelligent document management

More information gives you more control. Streamline NX enables organizations to track usage and identify trends, which you can use to implement new controls or policies that encourage more responsible print behaviors for individuals or groups. By taking advantage of every available detail, you can manage user access and print activity more efficiently for Lanier MFPs, whether it's with more robust authentication, stricter quota settings or other document management tools available only with Streamline NX.



Lanier Streamline NX Available Plug-ins

INCLUDED FREE

Image Enhancement Plug-in

Image processes that can be performed include hole punch removal, deskew and despeckle of scanned documents

OPTIONAL

“HotFolder” Plug-in

Lets administrators specify a folder to monitor. Files deposited into the folder are automatically imported by Streamline NX and delivered according to rules specified by the administrator

RightFAX Plug-in

Enables the sending of documents from Streamline NX to a RightFAX address via the RightFAX server — all directly from the MFP control panel. Provides scanned document distribution by fax without the need for a fax-enabled MFP

SharePoint® Plug-in

Allows Streamline NX to scan documents into Microsoft SharePoint, including automatic generation of folders and associated document information

Barcode Plug-in

Gives Streamline NX the ability to read barcodes in a document, route the document based on this data and extract document description information for processing. Linear and 2D barcodes supported

DocumentMall™ Plug-in

Scanned documents can be routed into a DocumentMall online storage account. Streamline NX automatically delivers the document with its metadata and generates a DocumentMall folder

*Individual MFPs do not require additional licenses. Without an EDC license, there are still single sign-on capabilities, but no scan tracking.

Server PC Requirement

PC	PC/AT Compatible
CPU	Intel Xeon Processor 5000 Series 3.0 GHz (2CPU) or above recommended
Memory	4 GB or above recommended
Operating System	Refer to the supported OS, DBMS, Browser section
Database Engine	Refer to the supported OS, DBMS, Browser section
Virtualization	Microsoft Windows Server 2008 Hyper-V 2.0; VW Ware ESX 4.0; VW Ware ESX 5.0

Client PC Requirement

PC	PC/AT Compatible
CPU	Pentium Compatible 500 MHz or above minimum; Pentium Core2Duo 1.6 GHz or above recommended (2 core 2 thread)
Memory	128 MB or above minimum; OS recommended memory size
Supported Browser	Refer to the supported OS, DBMS, Browser section
Adobe Flash Player	Latest Version

Supported Operating Systems

Server	Microsoft Windows Server 2003 R2 Standard/Enterprise Editions – 32bit/64bit (WOW64) Microsoft Windows Server 2008 Standard/Enterprise Editions – 32bit/64bit (WOW64) Microsoft Windows Server 2008 R2 Standard/Enterprise Editions – 32bit/64bit Microsoft Windows Server 2008 R2 Standard/Enterprise Editions – 32bit/64bit (WOW64) Microsoft Windows Server 2012 Standard/Enterprise – 64bit (Native 64bit) Microsoft Windows Server 2012 R2 Standard/Enterprise – 64bit (Native 64bit)
Client	Microsoft Windows XP Professional – 32bit Microsoft Windows Vista Business/Enterprise/Ultimate Editions – 32bit/64bit Microsoft Windows 7 Professional/Enterprise/Ultimate Editions – 32bit/64bit