

LANIER

NSi AutoStore™



SOLUTION

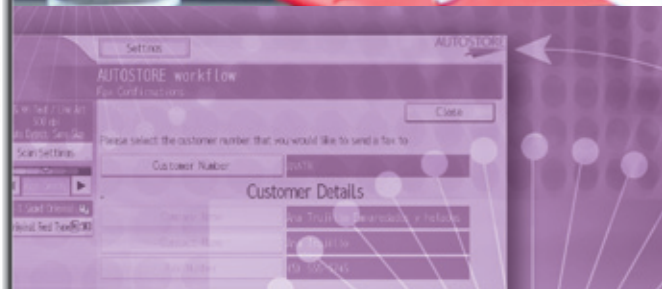
Drive document management efficiency

An easy-to-use software solution that automates scanning, distribution and management tasks to streamline document workflows and improve productivity.

Automate document-driven processes

Invoices, emails, contracts, office memos and other important forms—organizations rely on the secure capture and distribution of documents every day. In fact, documentation is critical to business success. Now, with NSi AutoStore available from LANIER® businesses can simplify how electronic and paper documents are consolidated and managed to improve productivity and profitability.

An innovative server-based application, AutoStore leverages existing output devices and captures information from a wide range of sources on your network to automate document management. With customized workflows, AutoStore minimizes error-prone and time-consuming manual processes to improve efficiency, enhance communications, support regulatory compliance and reduce costs.



Choose NSi AutoStore™ available from Lanier to capture and integrate paper and electronic documents into cost-effective document-driven processes and distribute them to a wide range of destinations automatically with one press of a button.

Capture Document Efficiency

Consolidate paper and electronic documents retrieved from a wide range of sources into pre-determined, customizable workflows and improve productivity throughout the enterprise.

- Capture documents from almost any source—including output devices, emails, faxes, network folders, FTP sites, Microsoft Office applications and more—automatically and securely to streamline workflow.
- Experience consistent performance throughout your organization via exceptional compatibility with all Lanier multifunctional products (MFPs) and scanners. Simply plug new output devices into the network for immediate access to AutoStore.
- Access critical information the moment it reaches your network for immediate processing and archiving, and to expedite document workflow.
- Authenticate users as documents are captured, encrypt documents during processing and encourage audit reporting to protect document integrity and ensure compliance.
- Customize scan menus for authenticated users or workgroups for quick, one-touch access to specific workflows.
- Search and retrieve database information quickly with automated indexing from the MFP control panel.

Enhance Document Quality

Take advantage of easy-to-use image enhancing capabilities to improve document quality or to convert to the most convenient formats for any audience.

- Transform paper documents or image files into text-searchable PDF documents to accelerate accurate index searching, improve document security and enable more effective communications.
- Produce cleaner documents for more professional communications by removing imperfections, including hole punches, skewed angles, borders, dust and more.
- Compress PDF files up to 10 times the original size—and maintain incredible image clarity—to minimize impact on slower mail servers and bandwidth constraints.

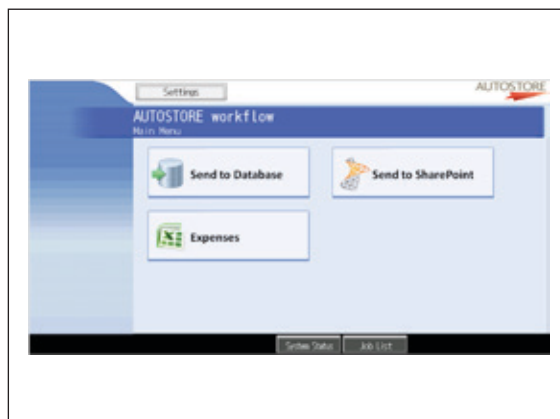
Share Documents Effectively

Distribute documents instantly to multiple destinations to ensure critical information is where it needs to be at all times.

- Create customized scanning workflows with one-touch automated operation so users can route documents to multiple people or back-end systems from the MFP control panel.
- Send scanned documents directly to an email recipient with one press of a button. Simply select the specified workflow and AutoStore scans the document, converts it to the format of your choosing and distributes it via an email attachment.
- Locate email recipients quickly, directly from the MFP control panel. Begin address searches and receive a list of applicable email addresses from company email directories in moments.
- Scan documents to Microsoft SharePoint and retrieve them using a simple search. The SharePoint URL for each document can be sent via email for easier access in the future.
- Automate daily document management tasks, including batching, splitting, indexing and more, conveniently through barcode recognition capabilities.



AutoStore works seamlessly with all Lanier devices, including MFPs and networked scanners and copiers.



Administrators can preset customized workflows that enable users to perform routine document tasks with one press of a button at the MFP.



Access company email and fax lists directly at the MFP control panel to accelerate distribution throughout your organization.

Streamline Document Flow

Manage critical business data securely and consistently for automated capture, search, retrieval and distribution that minimizes manual errors and improves total cost of ownership. Here are some examples:

Capture Information From:

- Lanier Multifunctional Products (MFPs)
- Scanners
- Desktops
- Microsoft Office Applications
- Email Client
- Email Inbox
- Directory (Network or Local)
- Email (SMTP, POP3, IMAP)
- Fax Servers
- Local or Remote Folders
- FTP Sites (Secure and Unsecure)
- Files (Batch, XML, Delimited Formats, ASCII)
- PC Desktop
- XML

Process Using:

- Full Text Recognition
- Zonal Text Recognition
- Forms Recognition (Structured/Semi-structured)
- Optical Mark Reading (OMR)
- Image Clean-up
- MRC PDF Compression
- Barcode Recognition
- Bates Stamp
- Encryption/Decryption
- Watermarking
- Reporting
- Automated Email Notification

Route Information Directly To:

- Network Folders
- Email
- Fax Servers
- Printers
- ODBC-compliant Databases
- Send to HTTP
- Secure FTP Sites
- Send to XML and WebDav
- Document Management Systems and Cloud Services from providers such as Microsoft, Google, EMC, OpenText, FileNet, Interwoven, IBM, Docuware and more
- CSV, Command Files
- Captaris RightFax

User-Friendly Administration

Streamline document management processes throughout the organization from a centralized location. Administrators can preset one-touch workflows, authenticate users and bolster security with a wide range of innovative capabilities including:

Key Features:

- Device Importing and Grouping (Sales, Marketing, Accounting, Post Office, etc.)
- One-Touch Multi-Route
- Scan Settings Granularity Controls
- Bi-directional Database Lookups
- Integrated LDAP Connection
- Various Index Fields
- Encryption of Jobs
- Generation of Menus/Forms

Security Features:

- Authentication (Common Access Cards, Windows, Active Directory, LDAP)
- Restricted Network Access
- Outbound Fax or Email Validation
- Outbound Fax Filtering

Enterprise Features:

- Clustering
- Load Balancing
- Multi-CPU Capable
- Multi-OCR Engine Capable
- Centralized Management
- Authentication Services

SPECIFICATIONS

HARDWARE

Windows Operating System (OS) running on computer with at least a 2 GHz processor

Minimum 2 GB recommended; 4 GB or greater is recommended

Minimum 10 GB of hard disk space

NIC Card

OPERATING SYSTEM

Supported Windows Operating Systems:

- Windows 2008 R2 SP1 Enterprise
- Windows 2008 (32/64 bit) Standard/Enterprise with the latest Service Pack
- Windows 2003 R2 (32/64 bit) Standard/Enterprise with the latest Service Pack
- Windows 2003 (32 bit) Standard/Enterprise with the latest Service Pack
- Windows 7 Professional 32/64 bit SP1

ADDITIONAL SOFTWARE

Microsoft .NET Framework 3.5

Microsoft .NET Framework 4.0

www.lanier.com

Lanier, Five Dedrick Place, West Caldwell, NJ 07006

©2012 Lanier® is a registered trademark of Ricoh Americas Corporation. All other trademarks are the property of their respective owners. The content of this document, and the appearance, features and specifications of products and services available from Lanier are subject to change from time to time without notice. Products are shown with optional features. While care has been taken to ensure the accuracy of this information, Lanier makes no representation or warranties about the accuracy, completeness or adequacy of the information contained herein, and shall not be liable for any errors or omissions in these materials. Actual results will vary depending upon use of the products and services, and the conditions and factors affecting performance. The only warranties for products and services available from Lanier are as set forth in the express warranty statements accompanying them.