

**LANIER**

# Card Authentication Package



Enhanced Locked Print NX

Please select job(s) to print or delete.

Microsoft Word - SEG0715.DOC	page:2	Fri Oct 31 14:39:22 GMT-04:00 2008	Login User Name: user10
SEG0909.pdf	page:2	Fri Oct 31 14:38:45 GMT-04:00 2008	Total: 5 Job(s)
AthenaCT_Scan_08(Scan06-7) [1].pdf	page:75	Fri Oct 31 14:38:17 GMT-04:00 2008	Page: 1/1
SEG0910.pdf	page:2	Fri Oct 31 14:38:00 GMT-04:00 2008	

SOLUTION

*Smart, cost-saving controls*

*Add this simple solution to manage access to individual device functions and exert superior control over output and document spending*

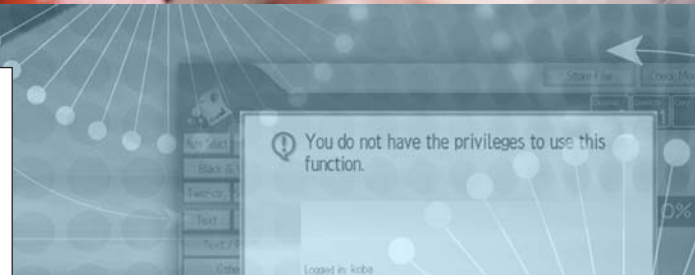
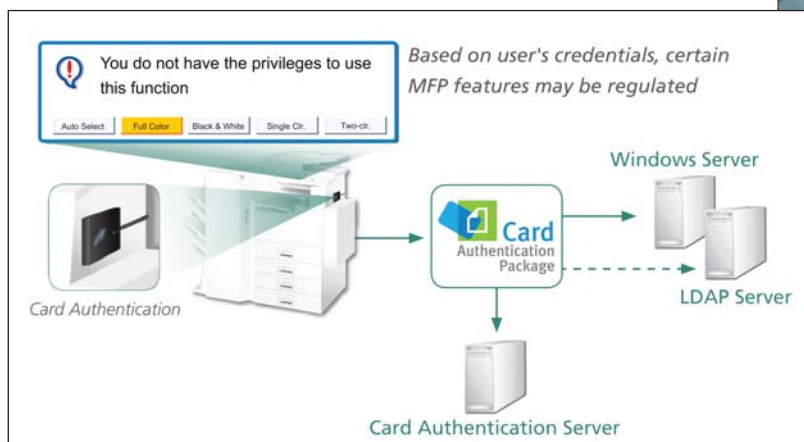
# Easy Management of User Access and Output

With the incredible variety of technology available today, organizations can create full-color, professionally finished documents in-house and send digital files around the world at the touch of a button. Yet many administrators are reluctant to add these solutions because of the risks they pose to operating costs and enterprise security. The LANIER® Card Authentication Package eliminates these risks, enabling any organization to tightly control access to specific system features and establish a safe, secure environment for printing, copying, scanning and document distribution.

## Reduce Document Costs

The Card Authentication Package replaces the conventional login process with a quick swipe of a proximity card, authenticating individual users and enabling them to access only those features administrators specify.

- Get all the benefits of full-color output without the risk of abuse. Restrict color printing or copying to privileged users and keep costs down.
- Integrate sophisticated high-volume multifunction products (MFPs) and printers without letting total output or supplies costs spiral out of control.
- Promote responsible printing and copying to reduce wasted paper and eliminate unnecessary or duplicate jobs.
- Drive volume to more cost-effective MFPs by restricting availability of personal or workgroup printers.



*The Lanier Card Authentication Package lets users access the system quickly and easily, while regulating which features and functions users can choose from based on their credentials. Administrators can customize credentials by user or by group for maximum flexibility.*

# Card Authentication Package

## Strengthen Enterprise Security

With the Card Authentication Package, organizations can protect sensitive documents from unauthorized viewing as well as authenticate users before they access other embedded applications on the MFP.

- Hold printed documents with the Lanier Enhanced Locked Print NX option. This feature does not release documents for printing until users authenticate, so documents are not left unattended in the output tray.
- Authenticate users automatically before they access Lanier GlobalScan NX or Lanier Enhanced Locked Print NX software on the MFP, which improves the security of scanning activities.
- Prevent users from seeing other users' print jobs in the queue. After authentication, users choose from a list that shows only the jobs they sent.
- Reduce waste by allowing users or administrators to delete print jobs that were sent to a device by mistake.

## Simplify Management Tasks

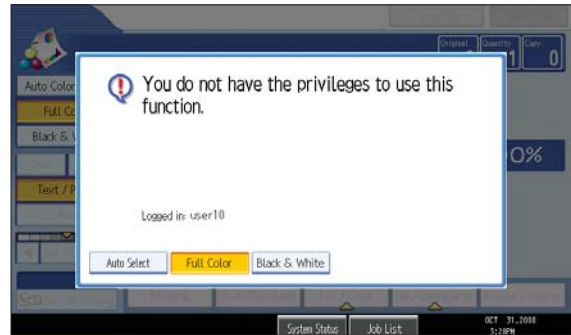
The Card Authentication Package makes it easy for administrators to set up user privileges, control costs and create a secure output environment.

- Manage all user permissions centrally through a convenient, easy-to-use Web interface.
- Set up access privileges and permissions by individual users or by groups of users.
- Leverage investments in access control systems. The Card Authentication Package works with most major brands of proximity card technology.
- Streamline user setup by importing users' names and ID card numbers directly from an access control database.
- Support existing authentication functions via Windows (Active Directory), LDAP and Kerberos.

## Improve Productivity Without Raising Costs

The Lanier Card Authentication Package gives administrators and other decision-makers the confidence to add full-color printing, high-volume output and versatile document distribution to the office — without the risk of these powerful capabilities incurring unexpected costs or compromising security.

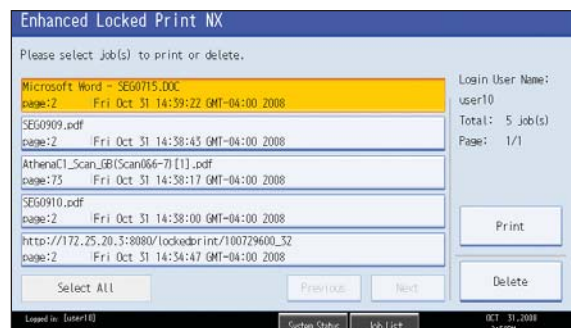
- Users authenticate with current proximity cards for access control.
- Access is granted only to the features specified by system administrators.
- Users must walk to the output device and authenticate prior to printing.
- Electronic document distribution only sends files to approved destinations.



*If unauthorized users attempt to copy in color without permission, a pop-up window denies the request.*



*The Lanier Card Authentication Package works with the proximity cards many facilities already use for employee identification.*



*To print securely, users swipe a proximity card at the device, then select their job or jobs from the print queue.*

## SPECIFICATIONS

**CARD AUTHENTICATION PACKAGE**

<b>Supported ID Card Type</b>	Proximity Card HID, Casi-Rusco and NxtWtch (others available with customization)
<b>Supported Network Authentication Type</b>	NTLM, Kerberos and LDAP
<b>Supported Authentication Directory Type</b>	Basic authentication in MFP address book, Active Directory and LDAP (Open LDAP)
<b>Supported Functions for Authorization Control</b>	Copy (Any, B/W, Full-Color, Two-Color, Single-Color, Limit to Auto Color, Full-Color/ Auto Color), Print (Any, B/W, Color), Scanner (Any), Fax (Any), Document Server (Any)

**CARD AUTHENTICATION PACKAGE – ES**

<b>Supported Network Authentication Type</b>	NTLM, Kerberos and LDAP
<b>Supported Authentication Directory Type</b>	Active Directory and LDAP (Open LDAP)
<b>Server Specification Requirements</b>	<b>CPU:</b> Pentium 4 2.4 GHz or above (recommended) <b>Main Memory:</b> 1 GB or above <b>Supported OS:</b> Windows 2000 Server/Advanced Server, Windows Server 2003 Standard/Enterprise, Windows Server 2003 R2 Standard/Enterprise, Windows Server 2008 (32-bit)

**CARD AUTHENTICATION PACKAGE – ES (CONTINUED)**

<b>Supported Browsers</b>	Windows 2000: MS Internet Explorer 5.x, Firefox 1.5 or later; Windows XP/Server 2003/Server 2003 R2: MS Internet Explorer 6.0, Firefox 1.5 or later; Windows Vista/Windows Server 2008: MS Internet Explorer 7.0, Firefox 1.5 or later
<b>Supported Functions for Authorization Control</b>	Copy (Any, B/W, Full-Color, Two-Color, Single-Color, Limit to Auto Color, Full-Color/ Auto Color), Print (Any, B/W, Color), Scanner (Any), Fax (Any), Document Server (Any)