



HP Discovery and Dependency Mapping software

Data sheet



HP Discovery and Dependency Mapping software automatically provides IT operations with visibility into complex dependencies between applications and the underlying infrastructure to optimize service management.

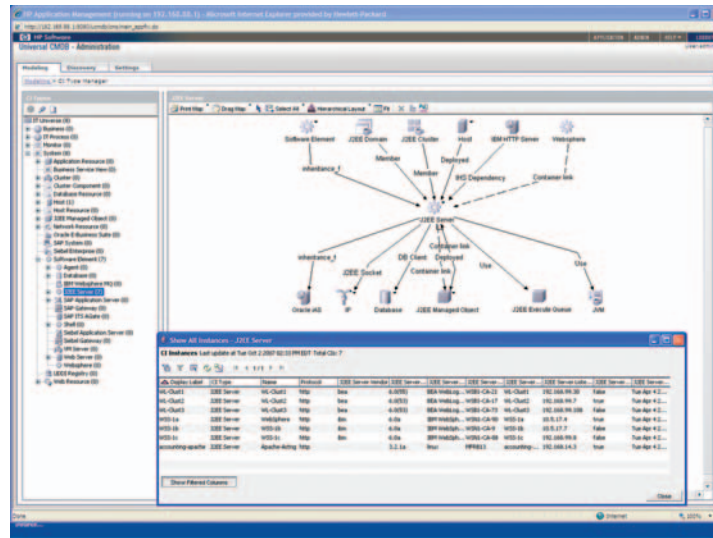
Map constant IT change to your business

Enterprise applications are central to your operations, and the availability of these applications is therefore critical to your business. Application availability is affected by planned and unplanned changes to your IT operating environment. With hundreds or even thousands of changes made daily in many situations,

enterprises usually rely on manually created maps to understand the relationship between applications and the underlying infrastructure. This is an error-prone, costly, overwhelming and ultimately inefficient process.

HP Discovery and Dependency Mapping software addresses this challenge. It dynamically discovers and maps IT service dependencies to provide visibility and control over business services with minimal effort and cost. It also populates the HP Universal CMDB to create an accurate model. Discovery and Dependency Mapping and the Universal CMDB are integrated tightly and share the same DNA. This tight integration streamlines data instantiation, updates and proactive impact analysts rather than relying on tying together two or more separate systems.

Figure 1: HP Discovery and Dependency Mapping software dynamically discovers and maps IT service dependencies to provide visibility and control over business services



Gain and maintain visibility into IT infrastructure and business service relationships

How Discovery and Dependency Mapping works

Discovery and Dependency Mapping gathers data by running queries against standard interfaces on your systems. No software is installed on the discovered systems. Its out-of-the box capabilities cover the majority of common IT systems and applications, and it can be extended to discover any information that is accessible over the network.

To gather information, you configure Discovery and Dependency Mapping with the credentials to run discovery patterns just as if a person were running the commands and gathering the results on a clipboard. Each pattern gathers only a small piece of the puzzle. However, each discovery pattern builds on another to create a rich model of the IT environment. The process is referred to as a spiral discovery process because results from one discovery pattern can cause another discovery pattern to launch. The spiral discovery process works in two ways:

- Widening allows Discovery and Dependency Mapping to discover configuration items (CIs), uncover related CIs and based on its findings learn about additional CIs.
- Deepening allows Discovery and Dependency Mapping to drill down and determine more details about discovered CIs.

Breadth and Depth of Discovery Patterns

Unlike network-oriented discovery products or asset inventory products, Discovery and Dependency Mapping explores CIs from Layer 2 through Layer 7 of the OSI model, as well as deep device and application-specific information using more than 100 standard protocols and techniques. Importantly, it also explores the relationships beyond the traditional “uses” and “contains” relationship types. It is object-oriented, allowing specific CIs to be discovered using a library of discovery patterns that can capture:

- High-level applications and their components like SAP®, Siebel, Citrix and MQ Series
- J2EE or .NET components and interdependencies
- Database components such as tablespaces, users and jobs
- Software assets such as installed products and patches
- System resources such as servers, CPUs, memory, network interfaces and storage devices
- Network devices such as routers, switches, load balancers, switch ports, VLANs and firewalls



Manage relationships across the enterprise

Discovery and Dependency Mapping can represent complex relationships and store them in the Universal CMDB. Besides simple relationship types, Discovery and Dependency Mapping goes deeper to capture complex relationships such as “use by,” “infrastructure monitor relationship,” “J2EE socket,” “cluster” and “DB client.” Using these detailed relationships, the Universal CMDB automatically can layer on rules to assist in impact analysis.

Customizing and extending discovery patterns

You can extend and customize the discovery process by discovering new and custom attributes, adding new CI types to the class model and using a discovery pattern for integration and reconciliation with an external data source.

Discovery patterns are written in Jython, a standard programming language. They can be retrieved, configured and edited from the graphical user interface. You have full access to the same set of libraries for pattern creation and modification that HP uses in development.

The HP Discovery and Dependency Mapping software and the HP Universal CMDB are tightly integrated to streamline data population, updates and impact analysis.

Key features and benefits

- Accelerate CMDB adoption by using more than 100 out-of-the box discovery patterns and automated discovery processes.
- Improve the accuracy of your CMDB through automated maintenance.
- Minimize deployment and maintenance overhead typically associated with customization and updates.
- Control the discovery process by selecting when and which patterns to run.

Controlling discoveries

IT organizations have complete control over the timing, frequency, scope and downtime windows in the discovery process. For example, you can configure Discovery and Dependency Mapping to do a low-level network sweep only once per month, discover routers and switches every week or discover web servers every six hours. Each discovery run can add new CIs to the CMDB and make changes to existing CIs.

A complete solution

Comprehensive training

HP provides a comprehensive curriculum of HP Software and IT service management courses. These offerings provide the training you need to realize the full potential of your HP solutions, increase your network optimization and responsiveness, and achieve better return on your IT investments.

With more than 30 years experience meeting complex education challenges worldwide, HP knows training. This experience, coupled with unique insights into HP Software products, positions HP to deliver the optimum training experience. For more information about these and other educational courses, visit

www.hp.com/learn

The smartest way to invest in IT

HP Financial Services provides innovative financing and financial asset management programs to help you cost-effectively acquire, manage and ultimately retire your HP solutions. For more information on these services, contact your HP sales representative or visit:

www.hp.com/go/hpfinancialservice

Ordering information

For ordering information for HP Discovery and Dependency Mapping software, contact your HP Software sales representative.

Contact information

To find an HP Software sales office or reseller near you, visit: www.managementsoftware.hp.com/buy

HP Services

Get the most from your software investment

HP provides high-quality software services that address all aspects of your software application life-cycle needs. With HP, you have access to standards-based, modular, multi-platform software coupled with global services and support. The wide range of HP service offerings—from online self-solve support to proactive mission-critical services—enables you to choose the services that best match your business needs.

For an overview of HP software services, visit:

www.managementsoftware.hp.com/service

To access technical interactive support, visit the Software Support Online at: www.hp.com/managementsoftware/services

To learn more about HP Software Customer Connection, a one-stop information and learning portal for software products and services, visit: www.hp.com/go/swcustomerconnection

© Copyright 2007 Hewlett-Packard Development Company, L.P. The information contained herein is subject to change without notice. The only warranties for HP products and services are set forth in the express warranty statements accompanying such products and services. Nothing herein should be construed as constituting an additional warranty. HP shall not be liable for technical or editorial errors or omissions contained herein.

To learn more, visit www.hp.com/go/software

4AA1-4991ENW, October 2007

