



## Choices, Evolution and Value

# HiPath HG 1500

### Voice over IP for the Hicom 150 H

#### Now your business can have the HiPath Convergence Advantage

Siemens developed the HiPath Enterprise Architecture and supporting HiPath offerings to allow companies to evolve to a single information and communication network while protecting their investments in technology.

The HiPath HG 1500 is a fast Ethernet Network Interface that provides integrated gateway functionality for the Hicom 150 H communications server.

The HiPath HG 1500 transforms the Hicom 150 H communications server into a fully converged Voice over IP system—*that's reliable, feature-rich, easy to implement and affordable—making it one of the most powerful communication systems available.*

#### Your company benefits from:

- Reduced network costs. Single IP network for voice and data communications.
- Improved Customer Satisfaction. Employees have full Hicom Office feature access from all IP telephony devices.
- Improved corporate network performance and reliability. 24 hours a day, 7 days a week. SNMP-based error reporting.
- Improved productivity of your work force. IP connectivity for sharing server-based applications.

**Read on to find out how...**



# The Hicom 150 H HiPath HG 1500

Reliable, Feature-Rich Voice over IP Communications

## Key Features

- Multi-site Voice over IP Networking
- Hicom Office Telephony Features over IP
- IP/IPX Data Routing over Public or Private ISDN
- IP-based System Administration and Fault Management
- Powerful Network-based Server Applications via TAPI 2.1

## Multi-site Voice over IP Networking

With the HiPath HG 1500, you can create a seamless, single corporate image by connecting up to 16 of your offices together into one network over IP.

You no longer have to implement expensive point-to-point T1 connections and drop and insert equipment between all of your corporate locations.

Whether your corporate network is comprised of multiple small and medium sized offices or also includes a large enterprise location, the Hicom 150 H with the HiPath HG 1500 can extend a seamless corporate image to all of your business locations.

With CorNet N software standard on every Hicom 150 H model (OfficePoint, OfficeCom and OfficePro) and the HiPath HG 1500 Ethernet network interface, your business now reaps all of the benefits of a seamless corporate communications network over one IP network:

- Centralized messaging server with message waiting notification at remote offices. Reduce the number of messaging systems, maintain functionality, and streamline system administration.

- Caller name and telephone number display. Calls are handled as if they're a part of one system.
- Uniform extension numbering. 1 to 6 digit dialing across your entire network.
- Centralized attendant position. Streamline resources and handle calls more cost-effectively.
- Centralized inbound/outbound trunk access. Reduce the number of costly telephone lines.
- Centralized Call Detail Recording application. Eliminate call detail buffer boxes at each location.
- Virtual site-to-site call routing. Eliminate costly, dedicated, point-to-point T1 connections.
- User restriction class is recognized throughout all sites. Manage your call traffic and security.
- Tandem call switching. More cost-effectively route calls from site to site.

## Hicom Office Telephony Features over IP

The HiPath HG 1500 extends the full range of Hicom Office optiset E features to onsite and remote users over an IP LAN and/or WAN data network. Access to the Hicom 150 H for voice applications may be accomplished through local or remote LAN/WAN connections.

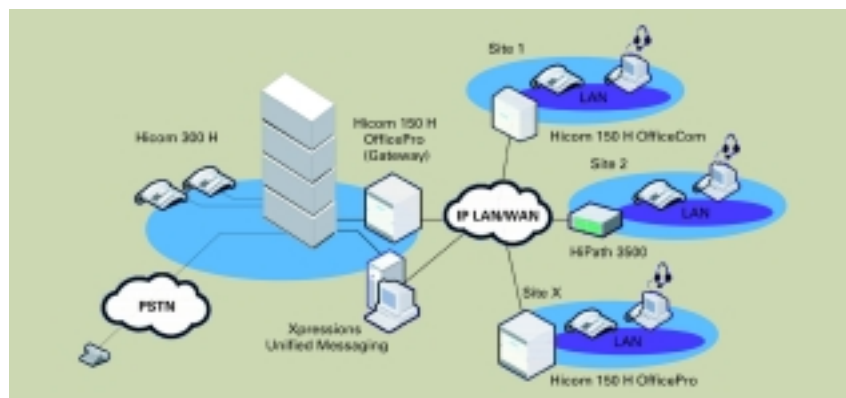
The HiPath HG 1500 offers you the choice of connecting Siemens optiClient 130 IP telephony software, optiPoint 300 HFA (Hicom Feature Access) IP Telephone or using an optiset IPAdapter for integrating the optiset E digital telephones into the IP voice network.

## Siemens IP Telephones Feature:

- Call Forwarding
- Call Transfer
- Hunt Group and UCD Call Center
- Message Waiting Notification
- Name and Number Display
- Conference
- Call Waiting
- Hold
- Do Not Disturb
- Night Answer
- Caller List
- ...and More!

## Extend Hicom Office Features to Your Teleworkers

Teleworkers with fast Internet access (DSL or cable modem), ISDN BRI telephone service or corporate virtual private network (VPN) facilities are connected to the Hicom 150 H voice and wide area data networking services as if they were in the office.

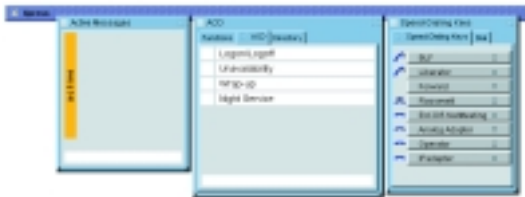


CorNet Networking over IP

## Siemens optiClient 130

### Now your business can have "One Wire to the Desktop" with the Siemens optiClient 130.

The Siemens optiClient 130 PC telephony software turns a sound equipped Windows personal computer into a powerful integrated multi-media communication center. The optiClient 130 PC telephony software is a Voice over IP solution that combines the flexibility of routing voice traffic over an IP data network with powerful Hicom Office voice and call management features...with *exceptional voice quality*.



optiClient 130 GUI Telephony Software

An optional Siemens optiKeyboard provides an integrated Siemens handset with conveniently accessible sound controls integrated in a standard 101 keyboard.



optiKeyboard

### Siemens optiPoint IPadapter

The Siemens optiPoint IPadapter allows deployment of optiset E telephones via your data network. The Siemens optiset E family of digital telephones provides you with access to a powerful set of

Hicom Office features. optiset E telephones may be connected to the Hicom 150 H via traditional system interfaces for digital telephones or Voice over IP via 10baseT LAN connections for IP telephones.



optiPoint 300 HFA IP Telephone

### Siemens optiPoint 300 HFA IP Telephone

The Siemens optiPoint 300 HFA IP telephone allows deployment of IP telephones via your data network. The Siemens optiPoint 300 HFA IP telephones provide you with access to a powerful set of Hicom Office features. optiPoint 300 HFA IP telephones are connected to the Hicom 150 H via 10baseT LAN connections.

### H.323 Client Support

The HiPath HG 1500 can also act as a gateway to standards-based H.323 clients. Standard software solutions, like Microsoft's NetMeeting™, can be deployed for basic voice connectivity.

### IP/IPX Data Routing

IP/IPX Routing turns Ethernet LANs at multiple locations into a corporate Wide Area Network (WAN) using ISDN switched data service.

HiPath HG 1500 makes it possible for remote PC users to access central data files or the files from PC users at other locations.

PC workstation users can have on-line access to an Internet Service Provider via ISDN.

## Firewall Security

With Password Authentication Protocol (PAP) and Challenge Handshake Authentication Protocol (CHAP), the HiPath HG 1500 provides a secure method of limiting access to valuable company network resources.

## IP-based System Administration and Fault Management

The Assistant administrative software for the Hicom 150 H includes the option to support customer database updates and system software upgrades over any IP connection to the Ethernet 10/100BaseT port on the HiPath HG 1500.

SNMP error and diagnostic messages may be reported to a LAN- or WAN-attached umbrella management server for problem resolution. Hicom 150 H servers can now be managed just like any other networked resource.

Call Detail Records (CDR) can be routed to a PC-based application over the IP network.

## Powerful Network-based Server Applications via TAPI 2.1

The enhanced Computer Telephony Integration (CTI) support of the HiPath HG 1500 enables LAN- or WAN-attached PCs to better manage both incoming and outgoing calls. Using standard based Siemens' or third-party TAPI software, PC users can:

- Process incoming call identification information and optionally launch an application associated with the caller—"screen pops"
- Initiate outbound calls from PC-based contact lists.

**Hicom Requirements**

Hicom 150 H V1.0 OfficePoint, OfficeCom, OfficePro Network Interfaces:

- ISDN Basic Rate Interface (OfficePoint or OfficeCom)
- ISDN Primary Rate Interface/T1/CorNet (OfficeCom or OfficePro)

One spare slot per HG 1500 module. HG 1500 module per system maximum:

- 1 per OfficePoint
- 2 per OfficeCom
- 3 per OfficePro

**Basic Customer Network Requirements**

Switched 10/100 Mbps Ethernet local area network with:

- 10/100BaseT RJ45 Unshielded Twisted Pair LAN cable drop per HiPath HG 1500 interface
- Static IP address per HiPath HG 1500 module
- DHCP (or static) IP address per optiClient or optiPoint LAN adapter
- One-way delay less than 150 msec between any HiPath elements
- Peak time packet loss less than 1% between any HiPath elements

Complete performance analysis is recommended to determine network suitability for HiPath deployment.

Integration with IPX traffic in a Voice over IP environment is not recommended.

**HiPath HG 1500 Technical Specifications**

- 10/100BaseT RJ-45 Physical Interface
- H.323 protocol (G.711 and G.723.1 codecs)
- 802.1p, DiffServ (RFC 2472), and/or ToS (RFC791) QoS
- IP and IPX/SPX Layer 3 PPP Routing
- Point-to-point Multi-link
- Up to 1024Kpbs OfficePro
- CAPI 2.0 Application Interface
- CHAP/PAP Access security/Authentication

**optiClient 130 for Microsoft® Windows® 98/NT/2000**

PC Requirements:

- Pentium II 233Mhz or better
- 128MB RAM
- 85MB HD
- CD ROM drive
- Ethernet 10/100 connection to LAN
- Compatible mouse/pointing device
- Sound card, microphone, speakers (full-duplex recommended)

**optiPoint IPAdapter Specifications**

Requirements:

- Ethernet 10BaseT interface
- 117 VAC
- Voice codec G.711 (180 KBps)
- QoS—none

**Order Description****HiPath HG 1500 Voice and Data Package for OfficePoint/Com**

Package Includes:

- 1 – HXGS Fast Ethernet Card
- 1 – 32Bit vCAPI PC Software
- 1 – Assistant I Administration Software
- 1 – Assistant Start PC Software
- 1 – License documentation

**HiPath HG 1500 Voice and Data Package for OfficePro**

Package Includes:

- 1 – HXGM card
- 1 – 32-Bit vCAPI Software
- 1 – Assistant I Administration Software
- 1 – Assistant Start Software
- 1 – License Documentation (reference only)
- 1 – MDF Adapter Cable for Hicom 150 H OfficePro

**optiClient 130 for 32bit Windows PC – 4 user package**

Package Includes:

- SUN/Java Licenses
- optiClient 130 Kit for Client packages
- optiClient PC Software CD

**optiKeyboard Multi-media Keyboard****optiPoint IPAdapter****Local Power Supply for optiPoint IPAdapter****MS-TAPI Service Provider SW for Windows NT – 30 users****MS-TAPI Service Provider SW for Windows NT – 80 users****MS-TAPI Service Provider SW for Windows NT – 250 users****Contact us!**

Visit our website at  
<http://www.icn.siemens.com>

Tel.: 1-800-765-6123

SIEMENS is a registered trademark of Siemens AG. Hicom and CorNet are registered trademarks of Siemens AG. Microsoft and Windows are registered trademarks of Microsoft Corporation.